

CYLINDER HOLDING DEVICES

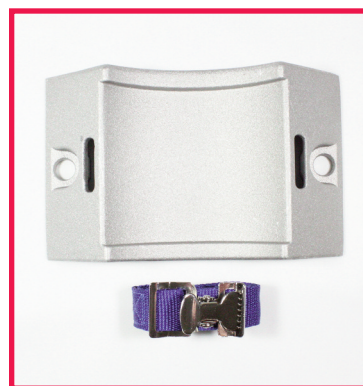
OSHA regulations require compressed gas cylinders to be secured from toppling when in storage or in use. The devices shown here will help you comply with these regulations.

WALL MOUNT CYLINDER HOLDER - MODEL 400

This cast aluminum cylinder holder provides an easy way to secure cylinders to a wall, in a gas storage cabinet, or other stable surface. The holder is attached with bolts or lag screws using the pre-formed holes 7 inches apart. The holder can be used with cylinders from 4 to 14 inches in diameter. Cylinders are held firmly in place with a nylon strap fitted with a sturdy buckle, with an optional steel chain and hook, or both strap and chain

HOW TO ORDER

Model	Description
400	Wall mount cylinder holder with strap
400C	Wall mount cylinder holder with chain and hook
400CS	Wall mount cylinder holder with strap, chain and hook
400 RS	Replacement strap.



BENCH TYPE CYLINDER HOLDER - MODEL 420

This holder is designed to prevent toppling of cylinders when they are next to a lab or work bench and cannot be secured to a wall. The special screw clamp holds securely to a table top without marring the surface. The holder can be used with cylinders from 4 to 14 inches in diameter. Cylinders are held firmly in place with a nylon strap fitted with a sturdy buckle, with an optional steel chain and hook, or with both strap and chain.

HOW TO ORDER

Model	Description
420	Bench mount cylinder holder with strap
420C	Bench mount cylinder holder with chain and hook
420CS	Bench mount cylinder holder with strap, chain and hook
400 RS	Replacement strap.

